

Tamaki Data Centre move - update

The NeSI Auckland equipment (includes Pan cluster) is migrating to the new Tamaki Data Centre to allow room for expansion.

The time-line so far:

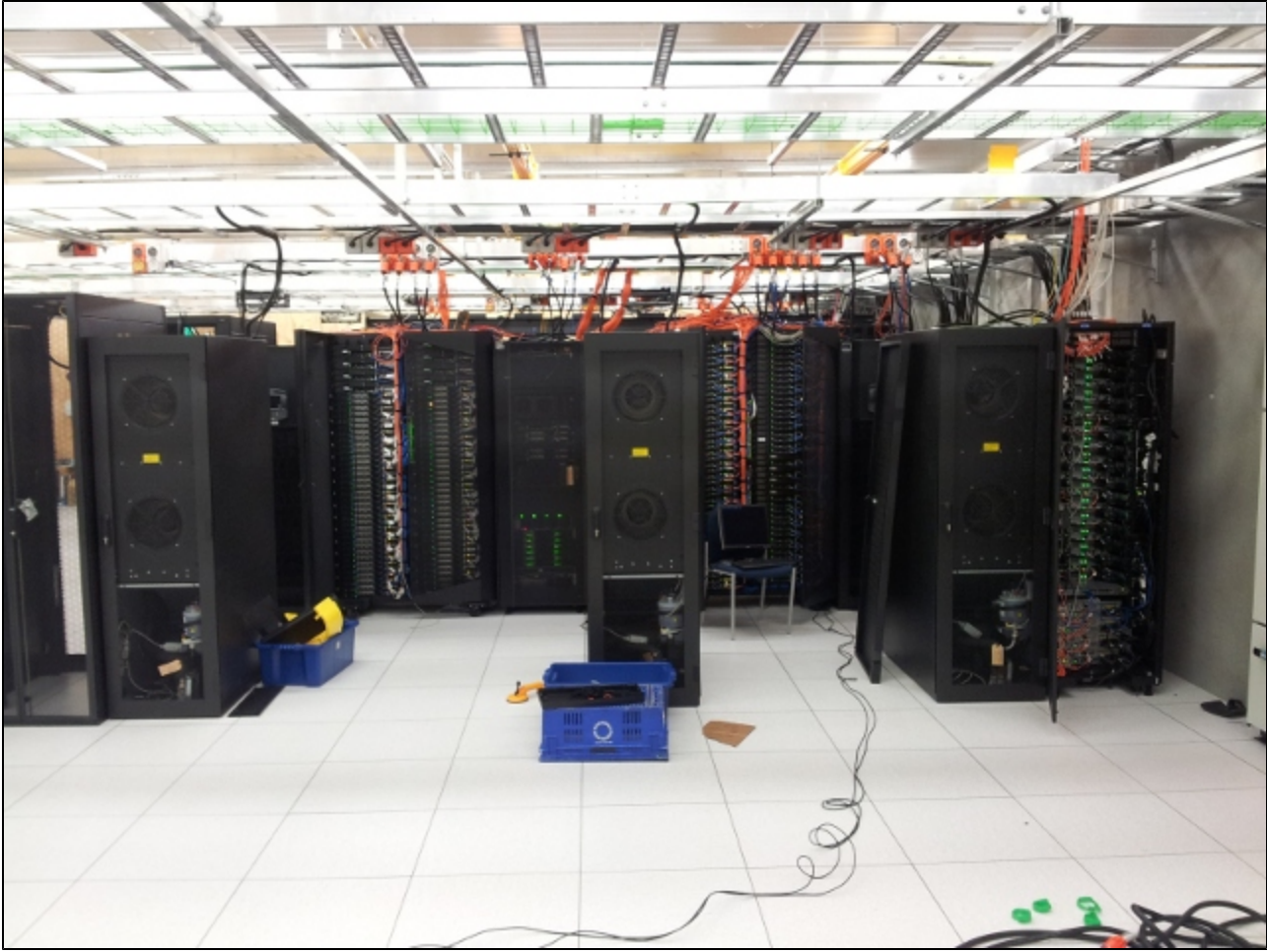
- 7 December - Friday
 - 09:00 Login node closed and job queues drained
 - 11:00 Power off all equipment
 - 12:00 Disconnecting cables
 - 17:00 Trucks move equipment
 - 19:00 Equipment braced in TDC
 - 20:00 Cabling commences



- 8 December - Saturday
 - 17:00 Power-up of racks
 - 21:30 Network functionality restored



- 9 December - Sunday
 - 08:30 IB working (with only one lost node at the moment)
 - 08:30 3 GPFS servers found
 - 13:00 Storage looking ok
 - 13:00 Temperatures holding
 - 14:00 LoadLeveler testing commences
 - 16:00 Benchmarks run - looking good



- 10 December - Monday
 - Most of the day spent fault finding and checking functionality
 - 17:00 Pan cluster available for researchers