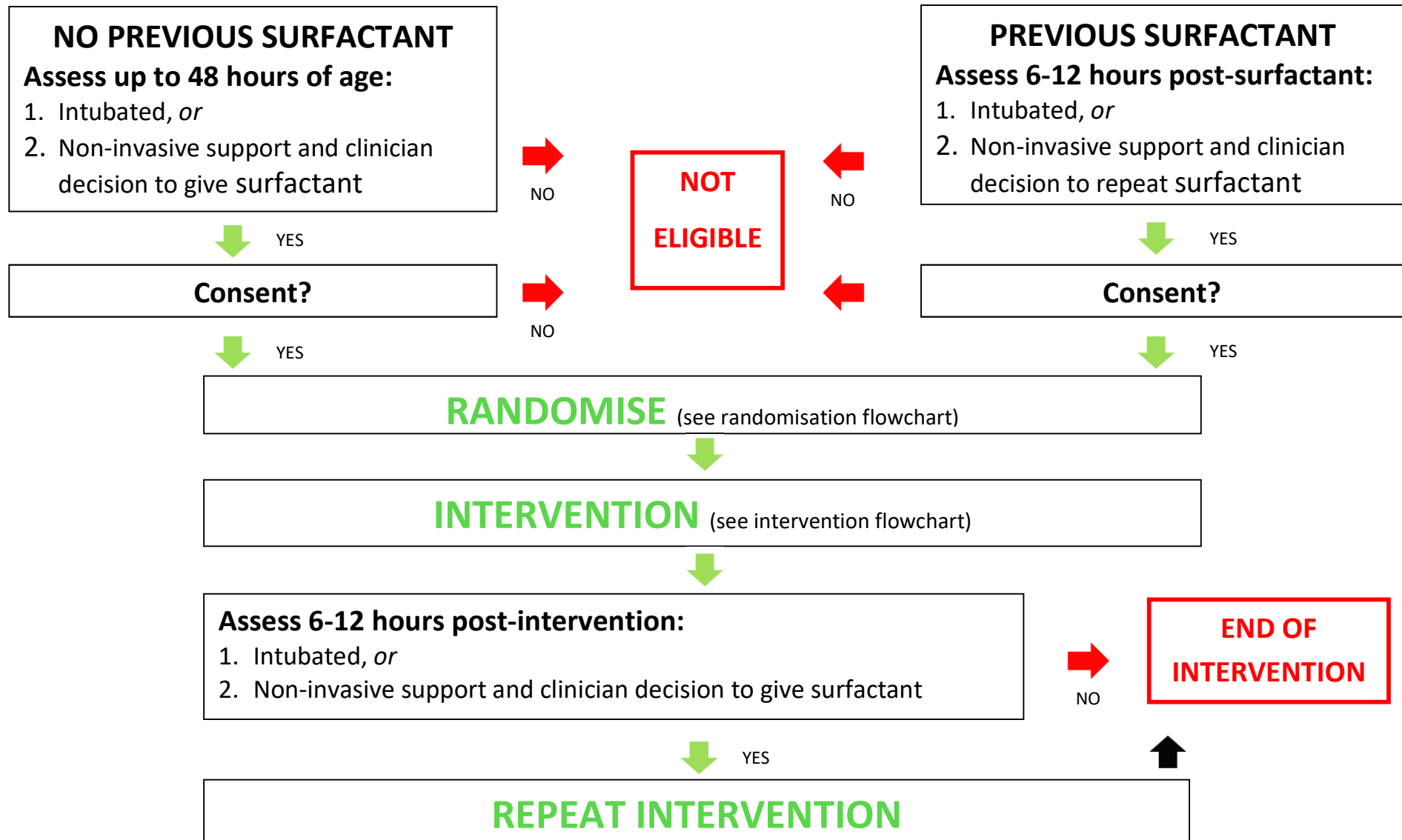


Infants born <28 weeks completed gestation and <48 hours old



PLUS - Exclusion Criteria

1. Prior treatment with corticosteroids for the prevention of lung disease (inhaled, nebulised, intra-tracheal, or systemic)
2. Infant is considered non-viable or is not going to be admitted to the neonatal intensive care unit (NICU)
3. Known/suspected major congenital anomaly likely to affect respiratory status (eg. upper airway obstruction, severe pulmonary hypoplasia fol. oligohydramnios, congenital lung malformation, major congenital heart disease)
4. Infant likely to be transferred to another non-participating NICU within 24 hours of birth